



ICOM international  
council  
of museums  
Italia

Musei per l'uguaglianza:  
diversità e inclusione

GIORNATA INTERNAZIONALE  
DEI MUSEI

18  
maggio 2020



@ICOMofficel



#IMD2020



icom.museum

Giornata  
di  
Studio

10:00 - 17:00

## Diversità di genere e di orientamento sessuale

Nicole Moolhuijsen

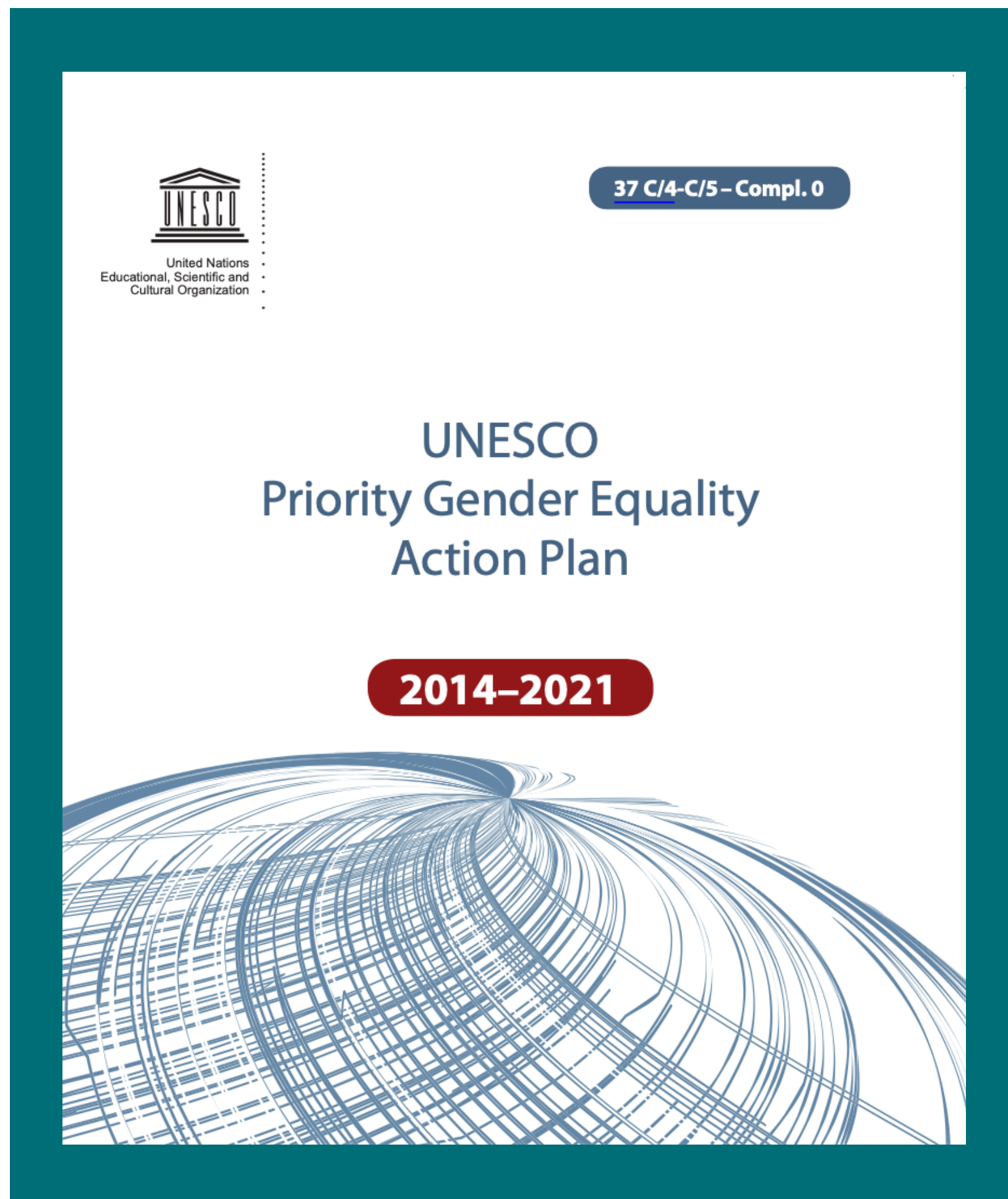
*Università Ca' Foscari, Venezia; We Exhibit*

**17 maggio 2020.**

**Giornata internazionale contro omofobia, transfobia e bifobia**



# DIVERSITÀ DI GENERE, SESSUALITÀ E CULTURA



# GENERE E MUSEI: DIVERSE PROSPETTIVE



- > esposizione
- > acquisizione
- > catalogazione
- > risorse umane
- > attività

**GEMM** Gender Equity in Museums Movement



JUNE 17, 2015 | COLLECTION & EXHIBITIONS, DESIGN  
**MoMA Acquires the Rainbow Flag**

Posted by [Paola Antonelli](#), Senior Curator, Department of Architecture and Design [Michelle Millar Fisher](#), Curatorial Assistant, Department of Architecture and Design



The Rainbow Flag waving in the wind at San Francisco's Castro District. Photo: [Benson Kua](#). Image used through Wikimedia Commons

Home Join Us Blog 5 Things You Need to Know Resources About Us

The Gender Equity in Museums Movement (GEMM) is a coalition of individuals and organizations committed to raising awareness about gender inequity in the museum workplace and offering resources for change.

[You can join the Steering Committee today!](#)

# INTERPRETAZIONE



**Significato e valore delle  
collezioni**

**Relazione con diversi  
pubblici**

**Attività**

**OGGI:**

**Esempi e stereotipi**

**UK e Paesi Bassi**

**Italia**

# KINGSTON LACY | NATIONAL TRUST



**'Challenging histories': connessione fra collezioni e tematiche sensibili attuali**

**'Prejudice and Pride' in collaborazione con RCMG University of Leicester**



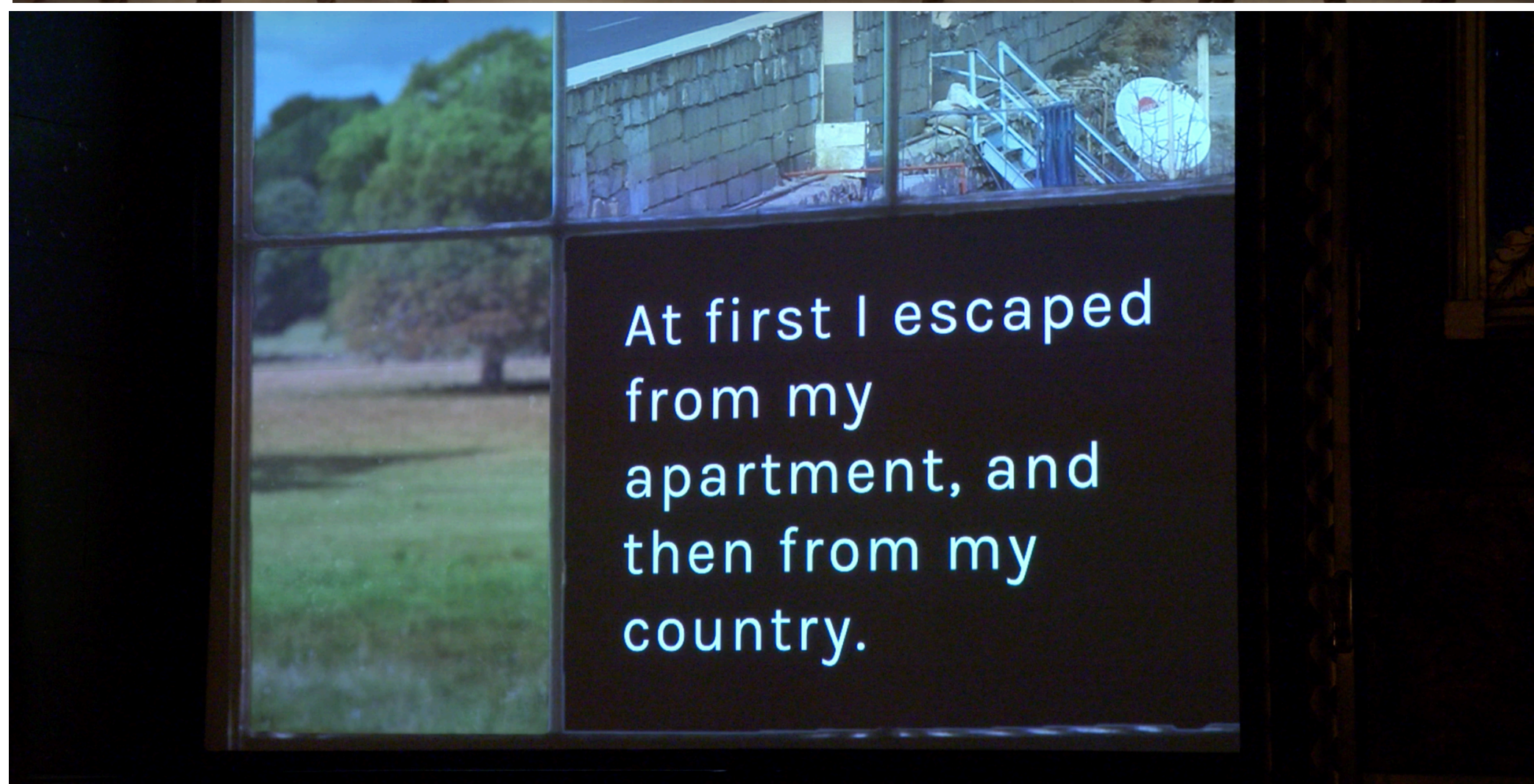
# KINGSTON LACY | NATIONAL TRUST



**Riferimento al dibattito sui diritti LGBT**

**Testimonianze contemporanee**

**Video**




# BRITISH MUSEUM

The British Museum

## Desire, love, identity

Follow the LGBTQ history trail



 <p><b>4</b> <b>A Maya ruler</b> East stairs, Ground floor This image of a male Maya ruler was once assumed to be a woman. He is dressed as a youthful maize deity who combines male and female genders.</p>	 <p><b>5</b> <b>N'domo masquerade mask*</b> Room 25, downstairs from Room 24 In many African cultures, gender and gendered roles are fixed through rituals. N'domo masks are worn by men but the masks can be male, female or androgynous.</p>	 <p><b>6</b> <b>Queen of the Night</b> Room 56 The Mesopotamian deity Ishtar had the power to assign gender. Some of her cult members seem to have been considered woman-like men who did forbidden things to delight her.</p>	 <p><b>10</b> <b>Hadrian and Antinous</b> Room 70 The beautiful youth Antinous was the emperor Hadrian's lover. When Antinous drowned in AD 130, Hadrian made him into a god and publically commemorated him across the empire.</p>	 <p><b>11</b> <b>Athenian wine amphora</b> Room 69 Intimate sexual relationships between men and youths were an accepted part of life in several ancient Greek city states, particularly in Athens during the 6th-4th century BC.</p>	 <p><b>12</b> <b>Sappho</b> Room 69 Although little is known for certain about the poet Sappho's life, her poems gave a voice to female desire that still resonates today.</p>
 <p><b>7</b> <b>Epic of Gilgamesh</b> Room 56 This famous poem describes how King Gilgamesh and the wild man Enkidu became close friends. The text describes their relationship in erotic terms.</p>	 <p><b>8</b> <b>Hor and Suty</b> Room 61 This inscribed stela (stone tablet) is dedicated to two ancient Egyptian men, Hor and Suty. It is possible that they may have been lovers, or were they twins?</p>	 <p><b>9</b> <b>The Warren Cup</b> Room 70 Decorated with two scenes of male lovers, this Roman wine cup could not be displayed publicly for most of the 20th century. Homosexuality was illegal in England and Wales until July 1967.</p>	 <p><b>13</b> <b>St Sebastian</b> Room 40 In recent times St Sebastian has become a gay icon inspiring filmmakers, writers and artists. The imagery of him which has become so influential originated in medieval Europe.</p>	 <p><b>14</b> <b>Ladies of Llangollen</b> Room 47 Lady Eleanor Butler and Sarah Ponsonby fled Ireland together in 1778. They set up home in North Wales, challenging the conventions of the era, and living the life of their choice there for 50 years.</p>	 <p><b>15</b> <b>The Ain Sakhri Lovers*</b> Room 51 This object dates from about 11,000 years ago. It is the oldest known sculpture of two lovers. The genders of the figures are unclear and open to interpretation. All that remains is the reflection of their love.</p>

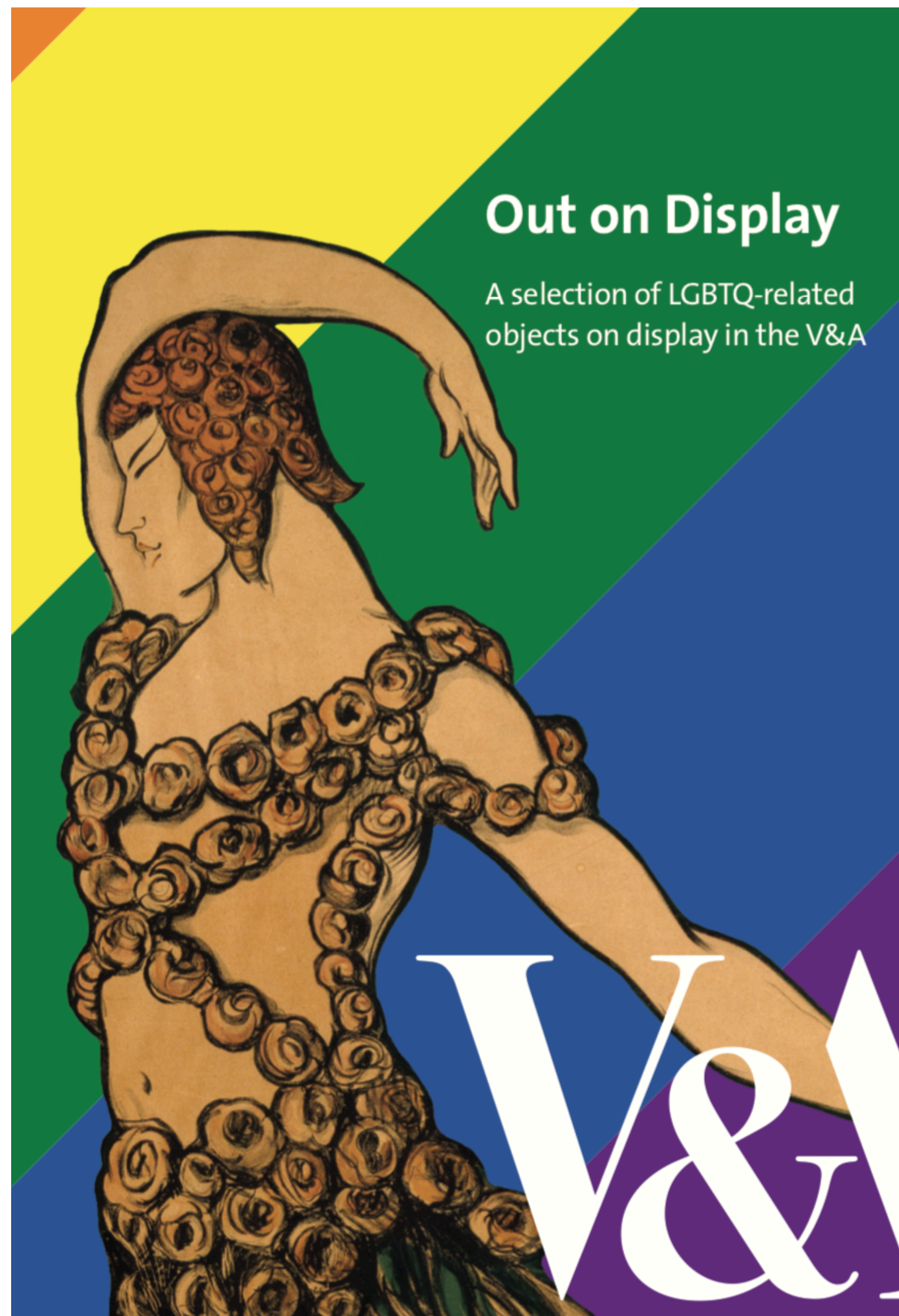
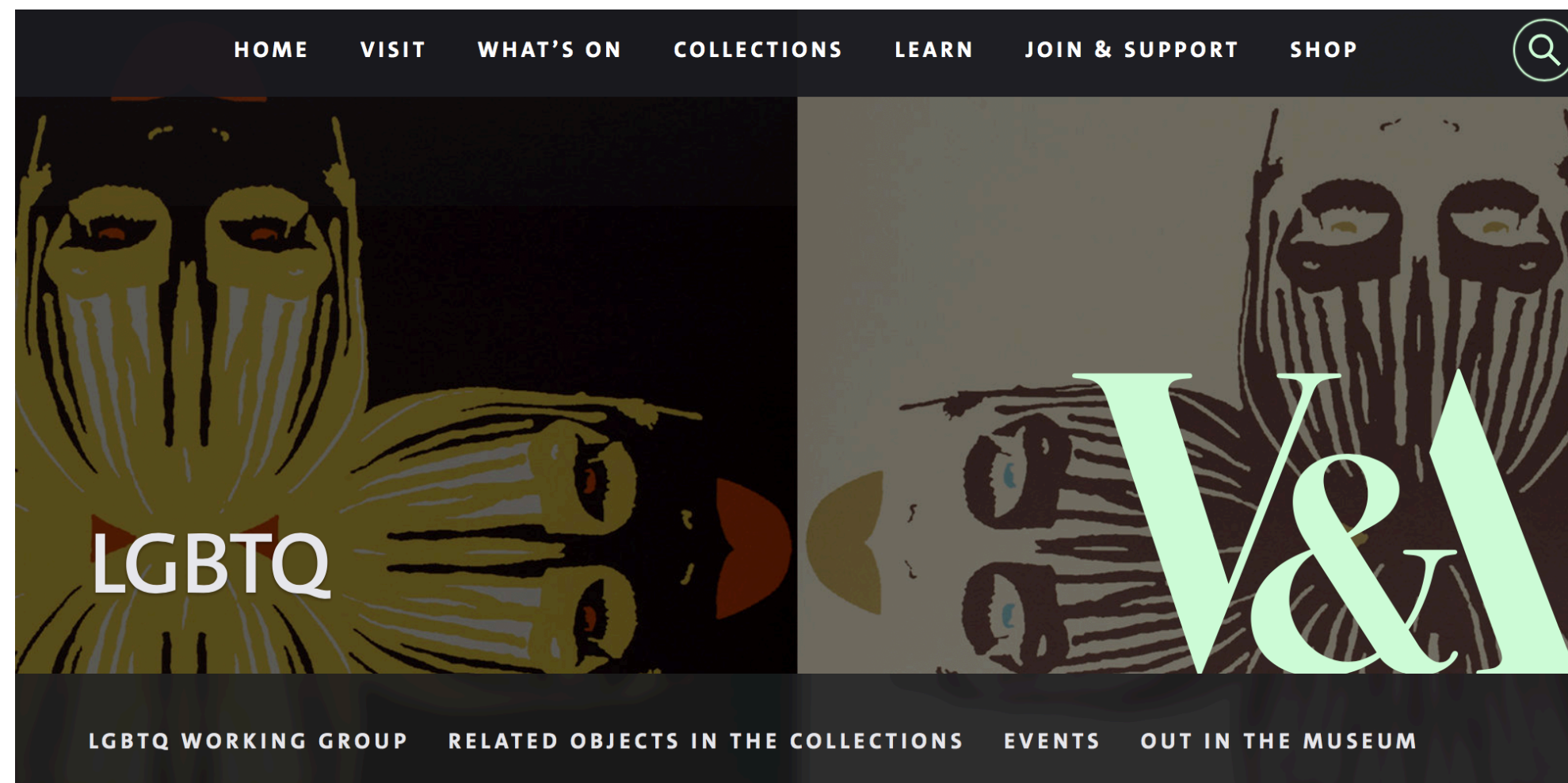
15 oggetti

60 min

Approfondimenti  
audio (spotify,  
google play...)



# VICTORIA AND ALBERT MUSEUM



<https://www.vam.ac.uk/info/lgbtq>

**Gruppo di lavoro (staff)**

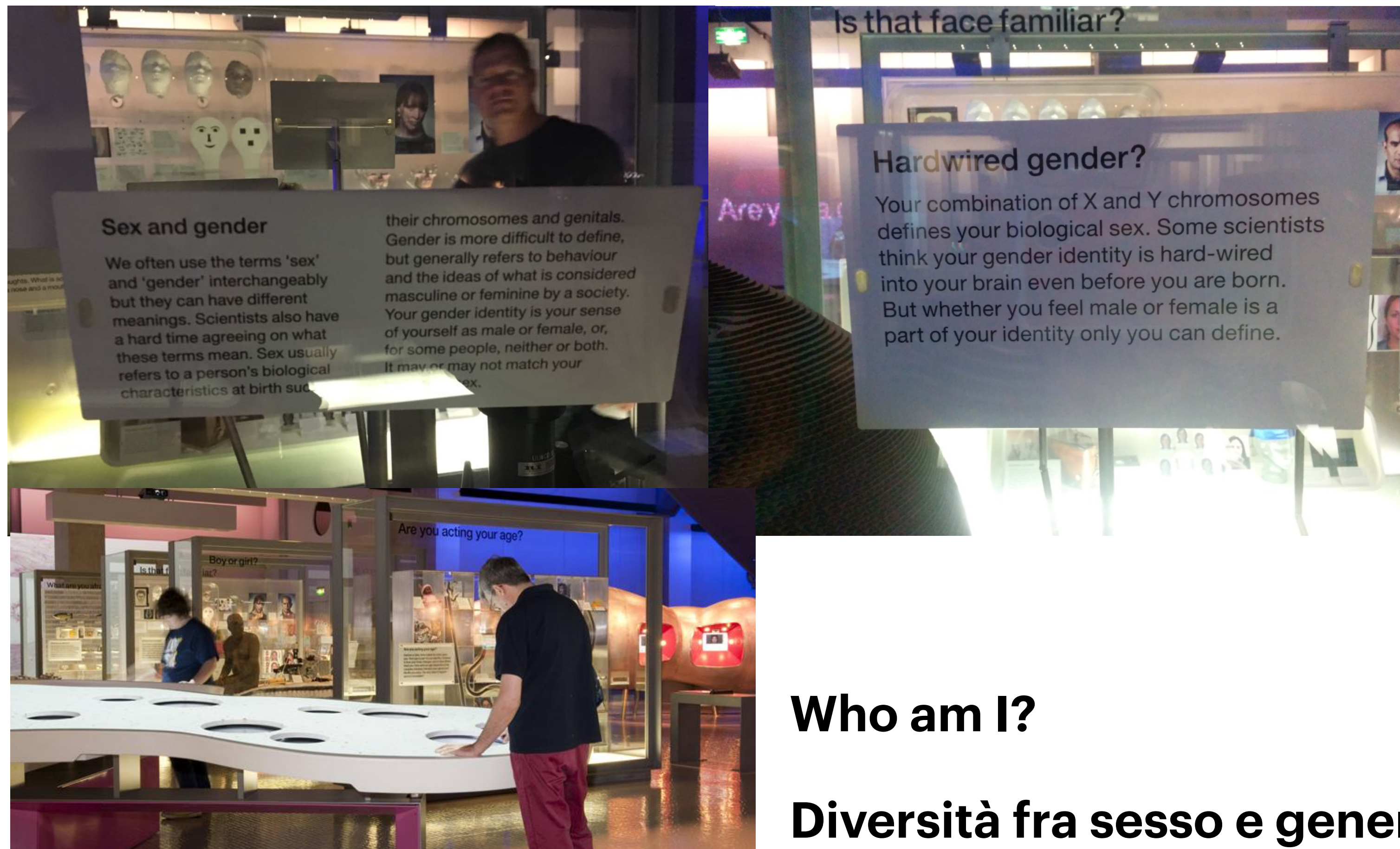
**Catalogazione**

**Glossario**

**Attività e eventi**



# SCIENCE MUSEUM



**Who am I?**

**Diversità fra sesso e genere**

# IHLIA LGBT HERITAGE



**Collezione LGBT**

**'Queering the collections'**

**Simposi, mostre, attività per diversi pubblici**

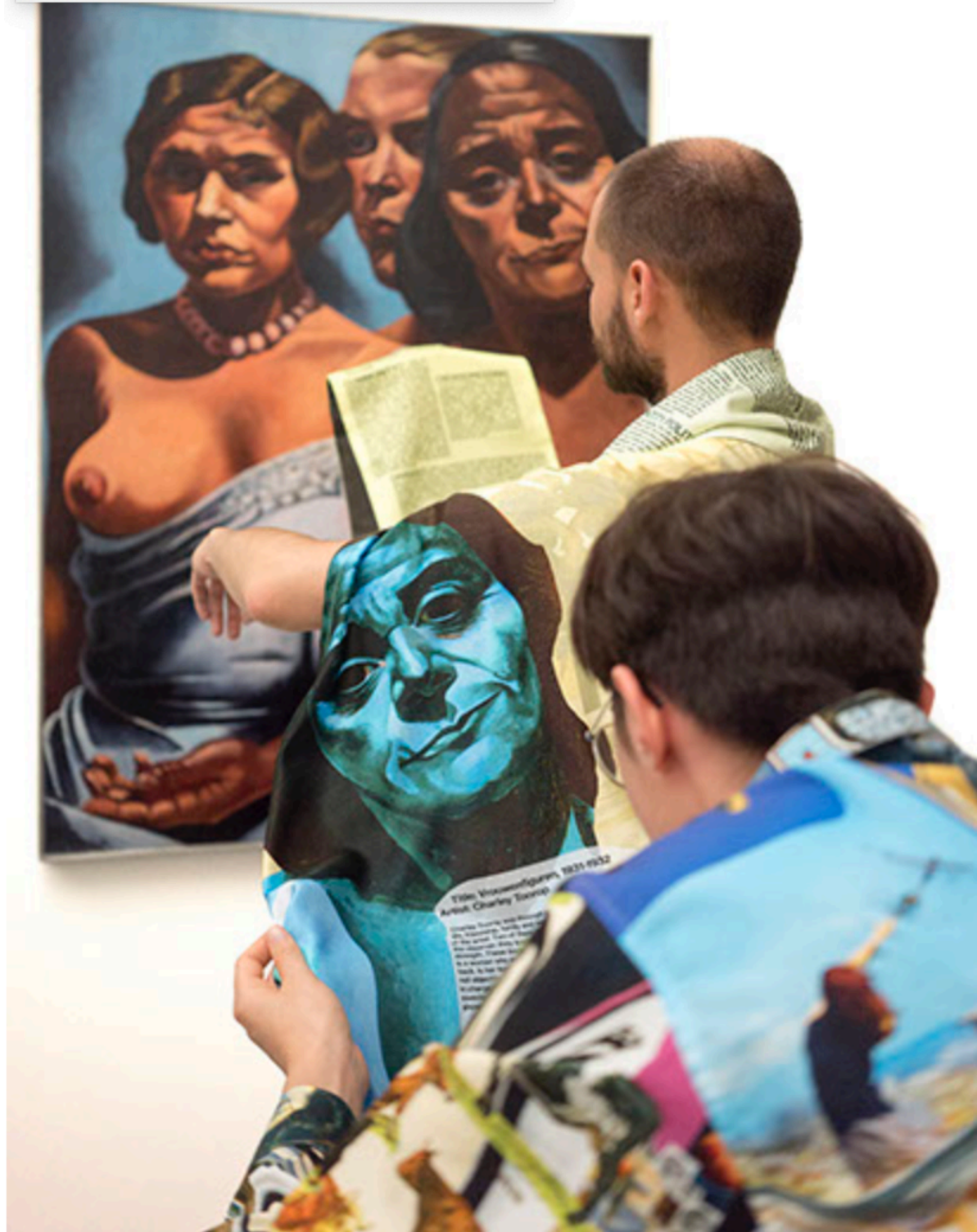
**Coinvolgimento associazioni attiviste**

**2019: Mostre su identità TRANS**



# VAN ABBEMUSEUM

Olle Lundin Qwearing the Collection  
Van Abbemuseum



**“Queer” come approccio metodologico**

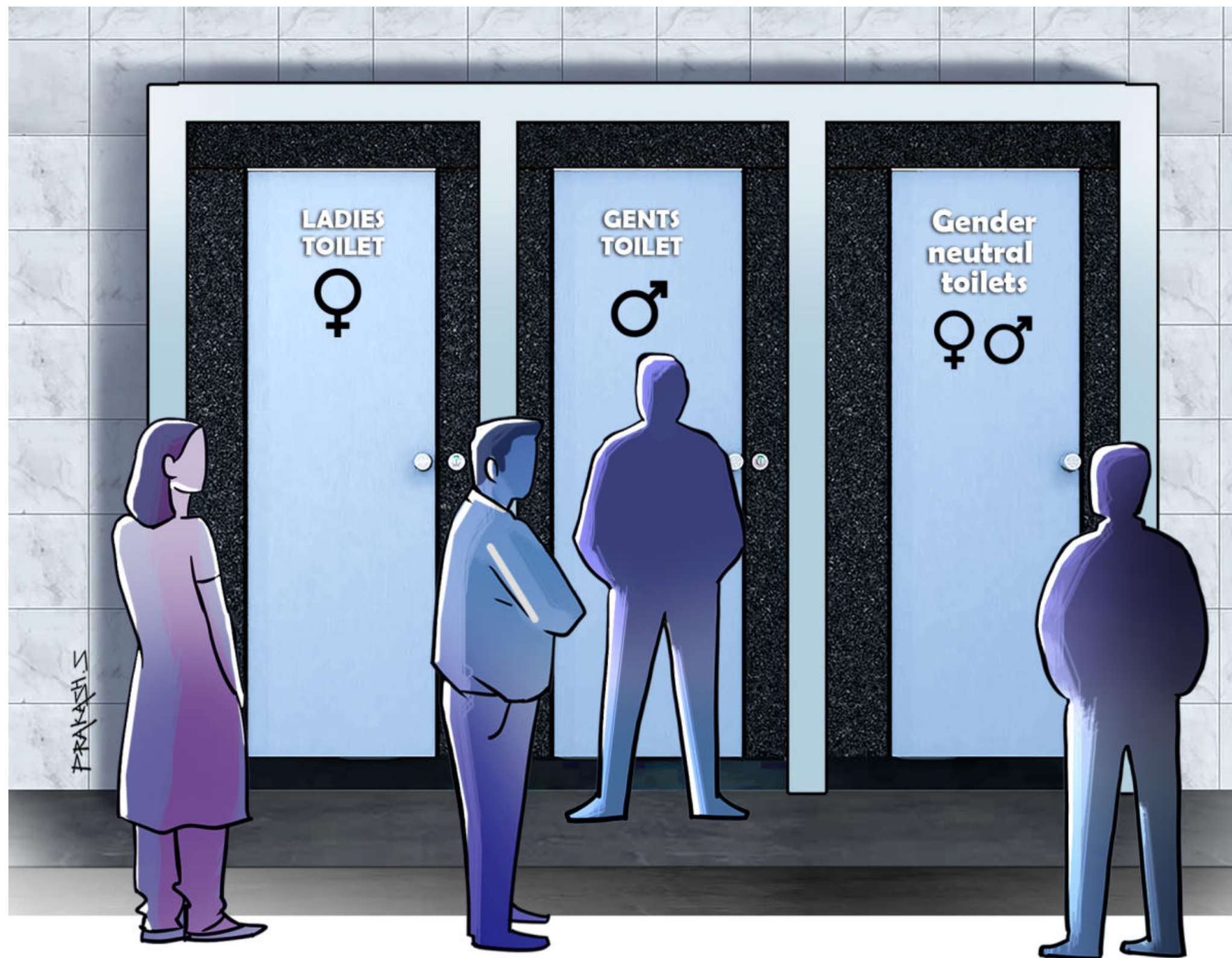
**L’approccio Queer mette in discussione le gerarchie e gli schemi di potere**

**Queer reading group**

**Relazione stretta con le comunità di Eindhoven**

**Visibilità e valore a diverse voci**

# ACCESSIBILITÀ E SEGNALETICA



We try to practice equality and make everybody feel welcome, even in our bathrooms. Gender neutral toilets are one step in reducing segregation and not imposing identities on our visitors.

Separate toilets are still available in the museum cafe if you wish to use them..

## Gender-free toilets?

The Tropenmuseum wants to be a welcoming place for everyone. That's why the topic of gender-free facilities has come up for discussion at our museum. While for many, the introduction of gender-free toilets is a relief or a matter of course, others may feel uncomfortable. Their discomfort may, for instance, be religion-based or the result of an unpleasant experience.

There are guidelines for the design of gender-free toilets. Unfortunately, our entrance area does not meet the criteria. We did find a suitable spot on the second floor, though (within the exhibition area of What a Genderful World), so, that's where you will find two gender-free toilets. We want all visitors and employees to feel welcome. Even in our facilities.

# TROPENMUSEUM

TROPENMUSEUM

AMSTERDAM

WHAT A  
GENDERFUL  
WORLD

TROPENMUSEUM.NL

BLOCK BUSTER FONDS { BankGiroLoterij VSBfonds.  
PRINS BERNHARD CULTUURFONDS VandenEnde FOUNDATION

**Voce narrante: persona TRANS**

**Narrazione per domande su più livelli in cui viene messa al centro l'esperienza di chi visita**

***Does your body determine your gender?***

***How do you become a gender?***

**Attività per scuole e famiglie**

# RIFLESSIONI

- > Possibilità di azione su temi attuali che riguardano genere, sfera affettiva e sessualità**
- > Stereotipi contemporanei: identità di genere è fluida; diversità nelle relazioni affettive e sessuali fanno parte della storia dell'umanità**
- > Diversità e inclusione : rappresentazione? Inclusione nei processi**
- > Coinvolgimento comunità LGBT ? Temi attorno a corpo, ruoli e affettività riguardano tutt\***

# E IN ITALIA?

# Orlando

Eventi Festival Associazione Contatti English



IL FESTIVAL PROGETTI SPECIALI NETWORK ARCHIVIO PARTNER CONTATTI

EN IT

# 18°

Festival internazionale  
Bologna  
20 ottobre - 1 novembre  
2020

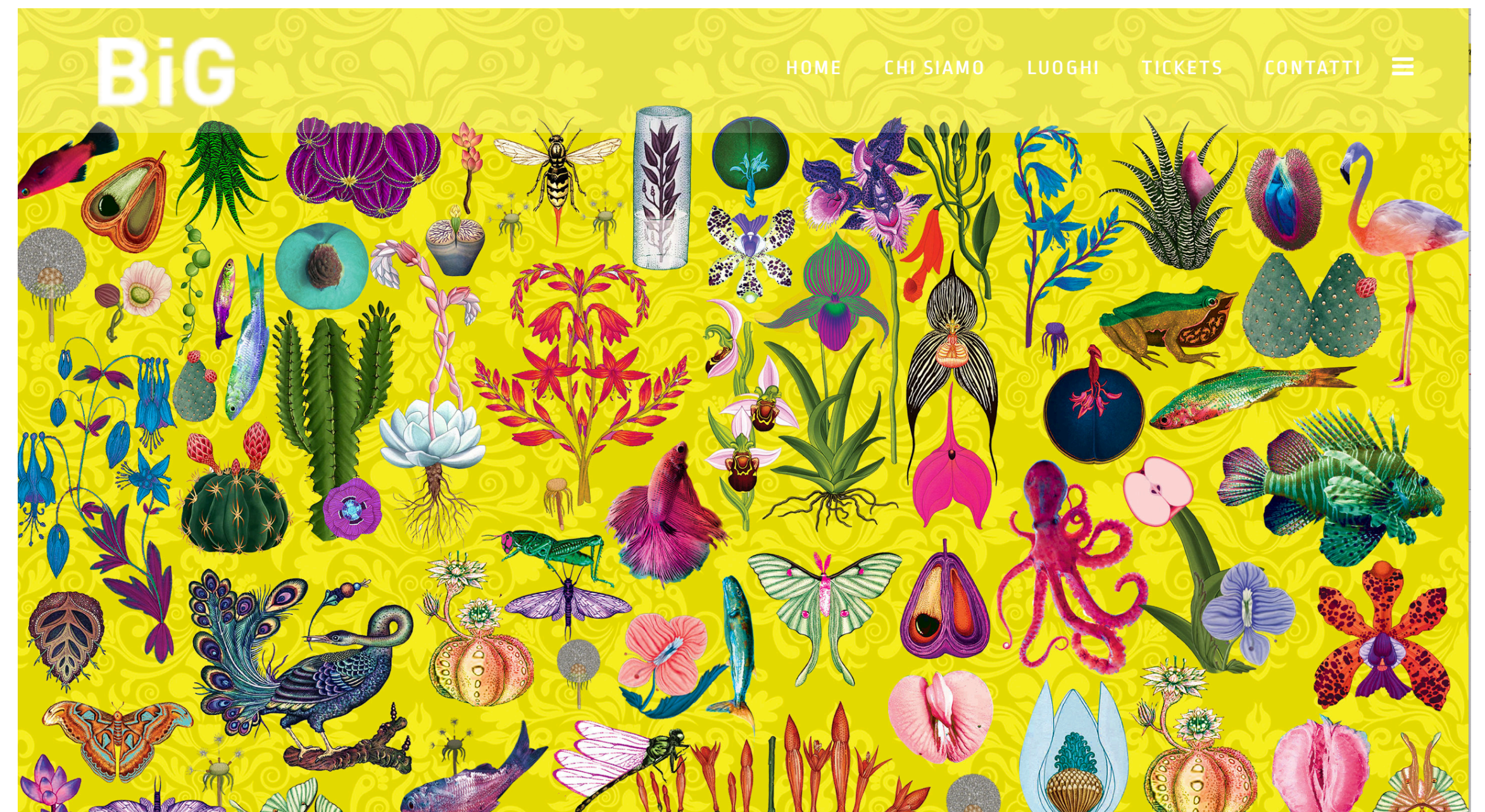


CHI SIAMO CALENDARIO ATTIVITÀ NEWS CLUBBING CONTATTACI



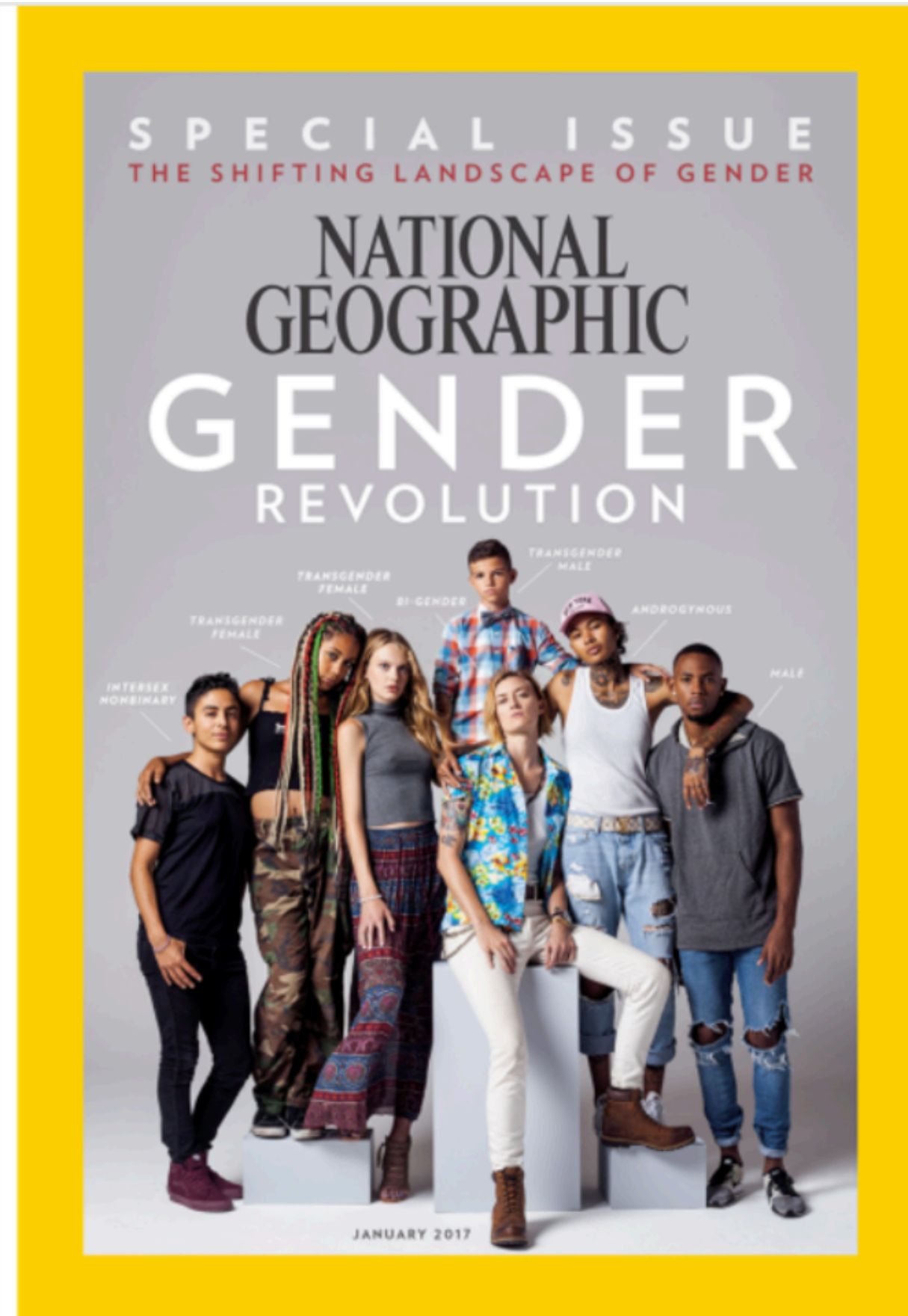
SOSTIENI I PROGETTI E I SERVIZI DEL  
CASSERO.  
**DONA QUI**

TANTE STORIE, TUTTE  
BELLISSIME E ONLINE





# FLUIDITÀ DI GENERE, CULTURA QUEER E GIOVANI



# ESEMPI ITALIANI

***DISTRETTO X***  
***SGUARDI LGBTQI+ SUI MUSEI***

GAMeC



18.5.20  
Diversity & Inclusion  
GAMeC e Orlando per ICOM

# UNA POSSIBILE STRADA



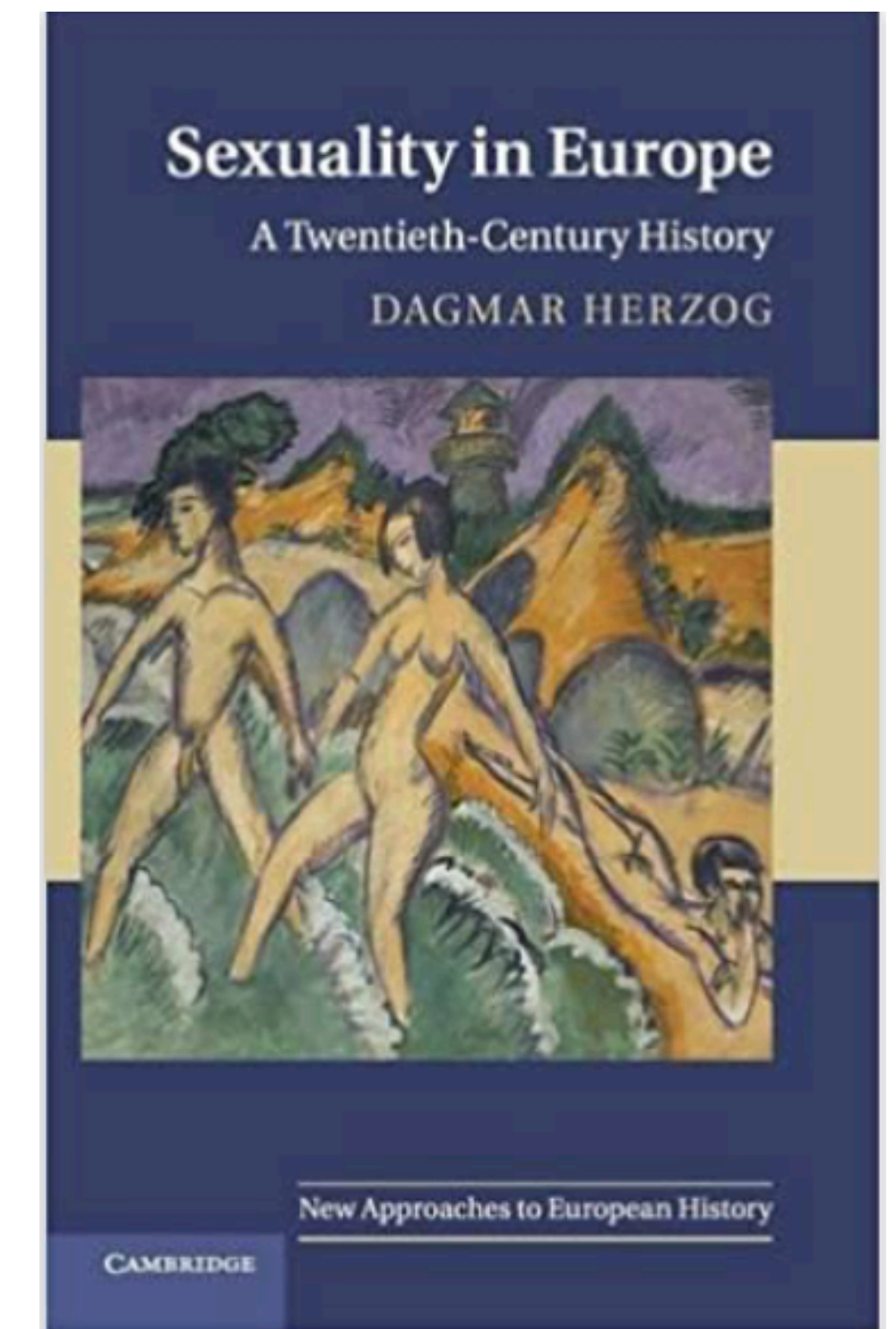
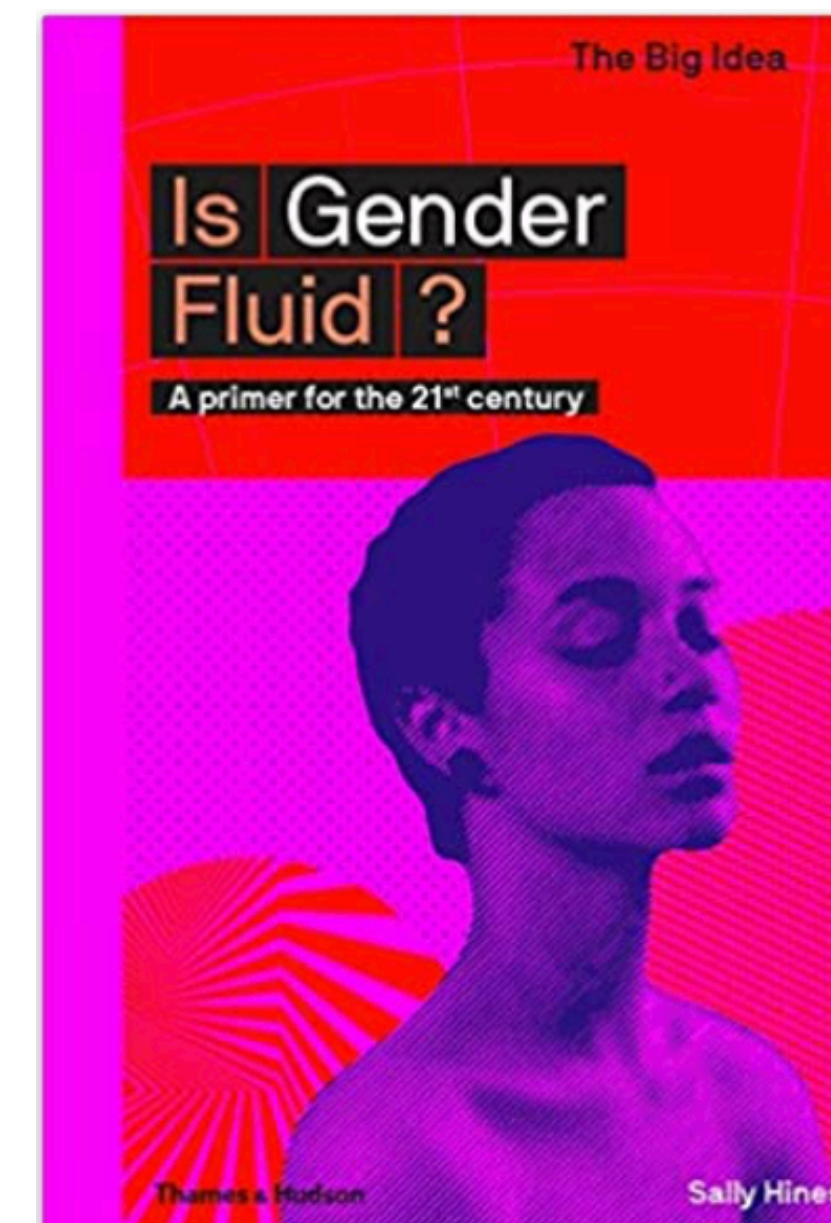
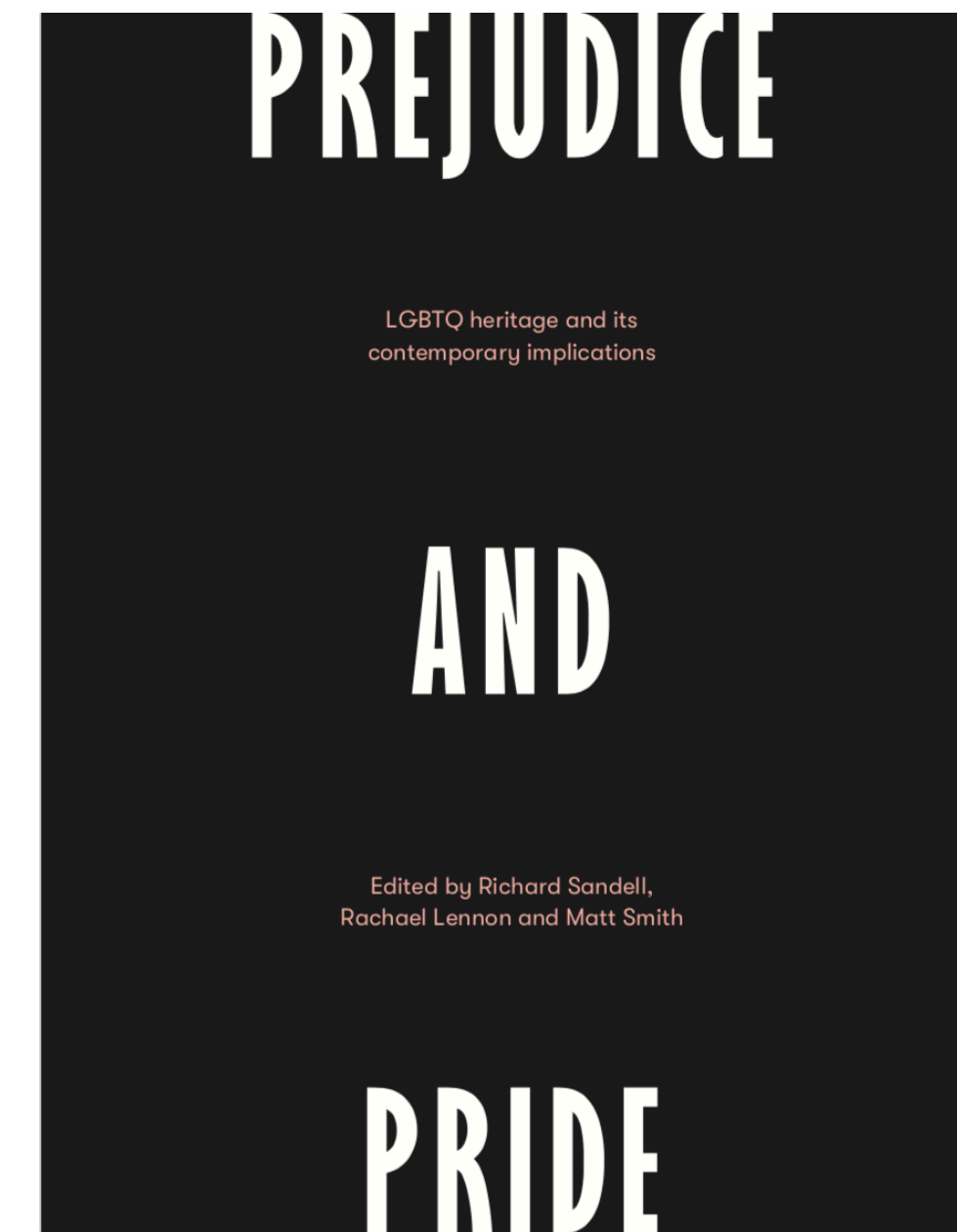
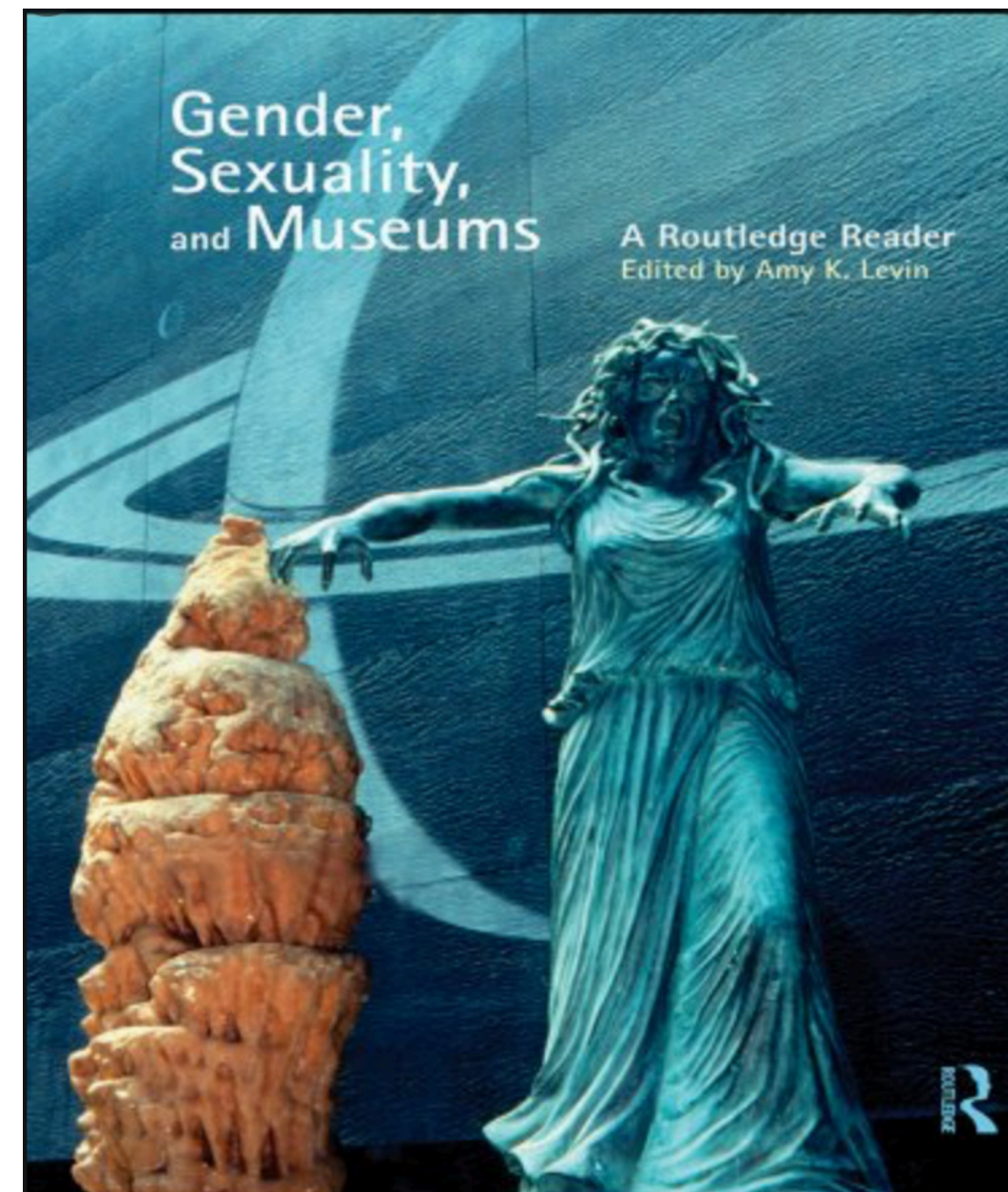
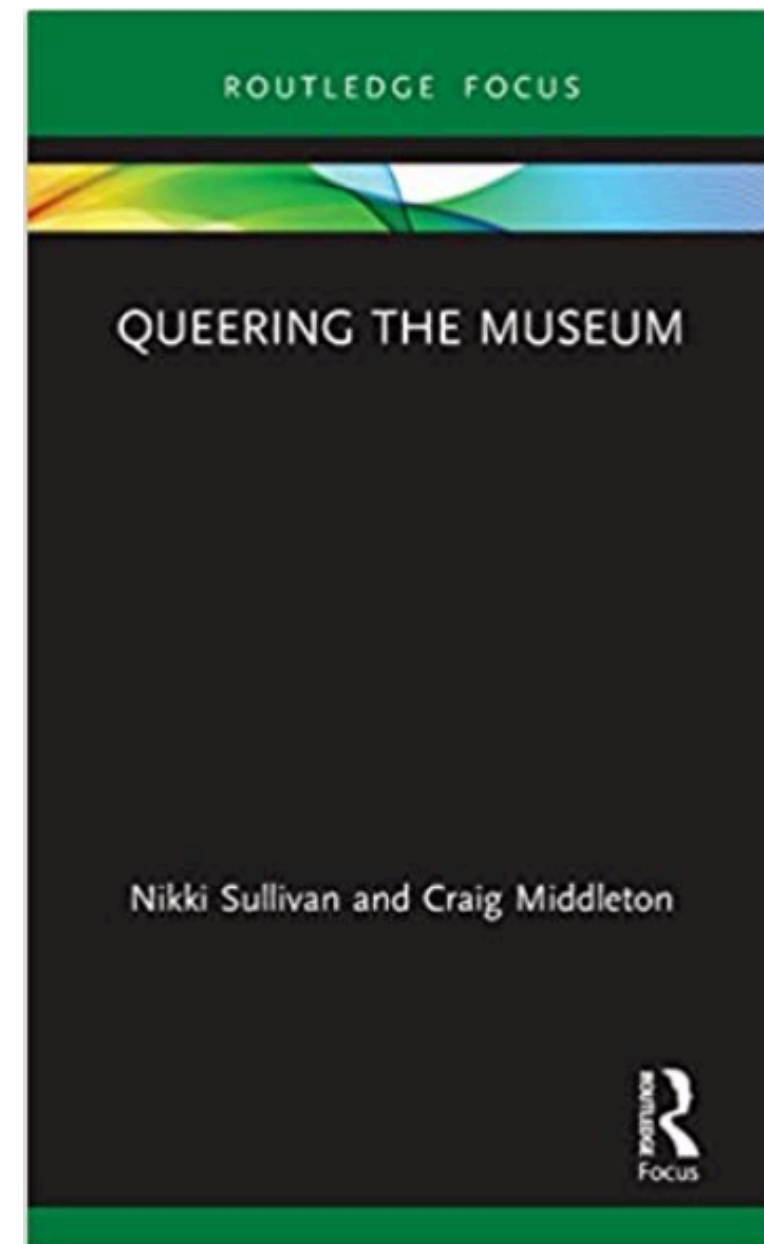
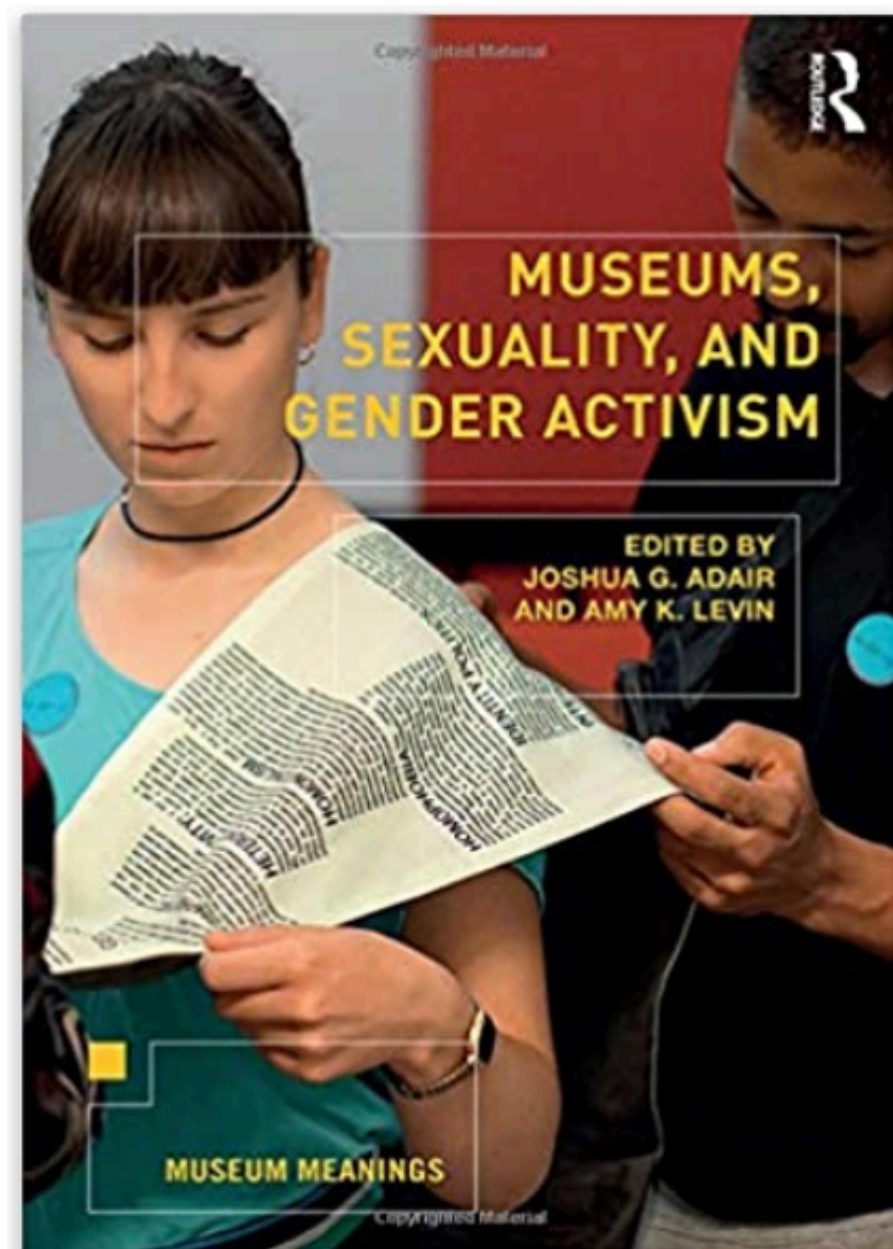
Dal 23 novembre  
vieni a giocare con



il nuovo percorso gioco per approfondire  
diritti e doveri, **uguaglianze e unicità**,  
superando **gli stereotipi**.

> **Attività formative sul contrasto agli stereotipi di genere in collaborazione con le scuole**

# RIFERIMENTI



# EQUALITY IS A HUMAN RIGHT

INTERNATIONAL DAY AGAINST  
HOMOPHOBIA, TRANSPHOBIA & BIPHOBIA

**GRAZIE!**